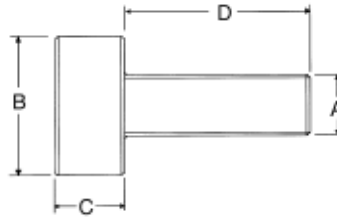


- ▶ 303 stainless steel
- ▶ Diamond knurl
- ▶ Inch and metric sizes available

Stainless Steel Thumb Screws

PART #	A	INCH D	B	C
4113	#4-40	5/16	5/16	3/16
4114	#4-40	3/8	5/16	3/16
4119	#4-40	1/2	5/16	3/16
4525	#6-32	5/16	5/16	3/16
4124	#6-32	3/8	5/16	3/16
4127	#6-32	1/2	5/16	3/16
4526	#6-32	5/8	5/16	3/16
4128	#6-32	3/8	3/8	3/16
4218	#8-32	3/8	3/8	3/16
4222	#8-32	1/2	3/8	3/16
4224	#8-32	5/8	3/8	3/16
4226	#8-32	3/4	3/8	3/16
4312	#10-24	3/4	3/8	3/16
4318	#10-24	3/4	1/2	3/16
4324	#10-24	3/4	3/4	3/16
4358	#10-32	3/8	7/16	3/16
4460	#10-32	1/2	3/8	3/16
4361	#10-32	1/2	7/16	3/16
4362	#10-32	5/8	7/16	3/16
4363	#10-32	3/4	7/16	3/16
4364	#10-32	3/4	1/2	3/16
4372	#10-32	3/4	3/4	3/16
4368	#10-32	1-1/4	1/2	3/16
4376	#10-32	1-1/4	3/4	3/16
4527	1/4-20	1/2	3/4	3/16
4528	1/4-20	5/8	3/4	3/16
4412	1/4-20	3/4	3/4	3/16
4414	1/4-20	1	3/4	3/16
4416	1/4-20	1-1/4	3/4	3/16
4418	1/4-20	1-1/2	3/4	3/16
4420	1/4-20	2	3/4	3/16
4428	1/4-20	2	1	3/16



PART #	Thread	METRIC D	B	C
4111	M3 x .5	8mm	8mm	5mm
4115	M3 x .5	9	8	5
41195	M3 x .5	11	8	5
4123	M3 x .5	13	8	5
41275	M3.5 x .6	8	8	5
4131	M3.5 x .6	9	8	5
4135	M3.5 x .6	11	8	5
4139	M3.5 x .6	13	8	5
4143	M4 x .7	9	9.5	5
4147	M4 x .7	11	9.5	5
4151	M4 x .7	13	9.5	5
4155	M4 x .7	14	9.5	5
4159	M4 x .7	16	9.5	5
4163	M5 x .8	9	11.5	5
4167	M5 x .8	11	11.5	5
4171	M5 x .8	13	11.5	5
4175	M5 x .8	14	11.5	5
4179	M5 x .8	16	11.5	5
4183	M6 x 1.0	13	13	6
4187	M6 x 1.0	14	13	6
4191	M6 x 1.0	16	13	6
4195	M6 x 1.0	18	13	6
4199	M6 x 1.0	19	13	6

- ▶ Precision thumb screw used in a variety of electronic component applications
- ▶ Available in 303 stainless steel and 360 brass
- ▶ Diamond knurl
- ▶ Washer face shoulder design

Thumb Screws with washer face

Stainless Steel PART #	Brass PART #	THREAD	D	A	B	C
4800	5800	#4-40	5/16	3/8	3/16	5/8
4801	5801	#4-40	3/8	3/8	3/16	11/16
4802	5802	#4-40	7/16	3/8	3/16	3/4
4803	5803	#6-32	3/8	3/8	3/16	11/16
4804	5804	#6-32	7/16	3/8	3/16	3/4
4805	5805	#6-32	1/2	3/8	3/16	13/16
4806	5806	#8-32	3/8	7/16	3/16	11/16
4807	5807	#8-32	1/2	7/16	3/16	13/16
4808	5808	#8-32	5/8	7/16	3/16	15/16
4809	5809	#10-32	3/8	7/16	3/16	11/16
4810	5810	#10-32	1/2	7/16	3/16	13/16
4811	5811	#10-32	5/8	7/16	3/16	15/16
4812	5812	1/4-20	3/8	1/2	1/4	3/4
4813	5813	1/4-20	1/2	1/2	1/4	7/8
4814	5814	1/4-20	5/8	1/2	1/4	1
4815	5815	1/4-20	3/4	1/2	1/4	1-1/8

